



We Cover Everything



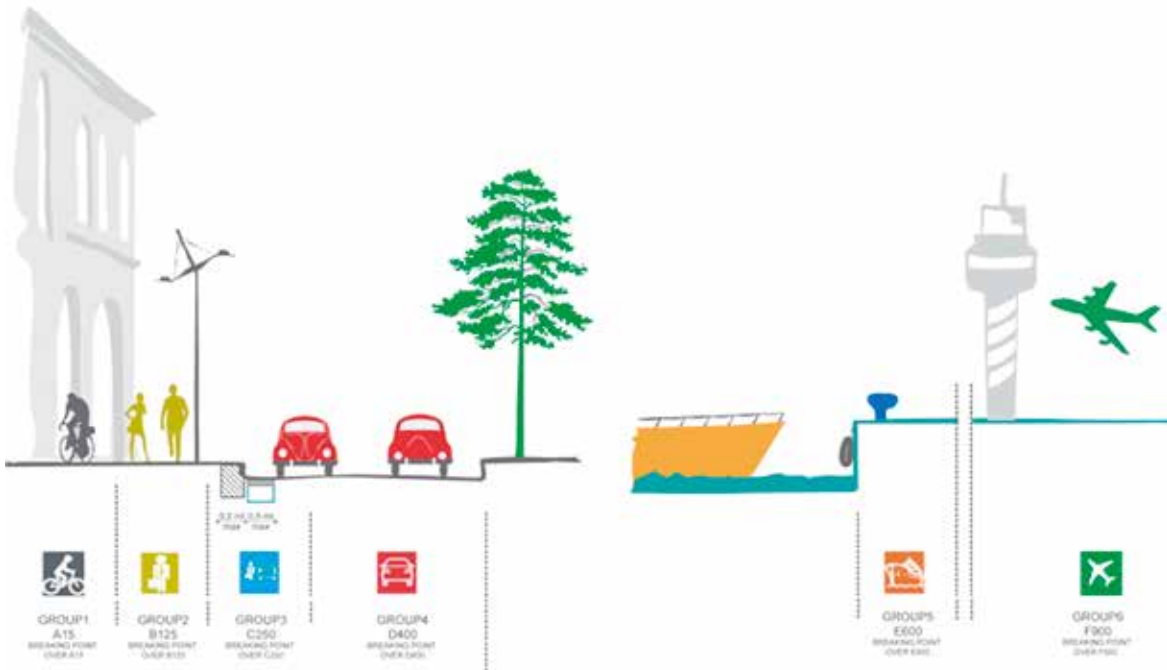
www.mhcireland.com

Manhole Covers Ireland

If you are looking for a high quality and personal service, we are the people to talk to. At Manhole Covers Ireland our staff have over 15 years' experience in the Manhole Cover and Drainage Channel business. We will give you our full attention and personal service, which you will come to expect and enjoy. We are located in Charlestown, Co. Mayo and have a 3-4 day delivery service on stocked products. Please let us put our experience to work for you.

Range

Manhole Covers Ireland Ltd supply a range of products to the following regulation EN 124 for manhole covers and gratings intended for public works:



Group 1 (Class A 15 minimum)

A 15 Areas exclusively used by pedestrians and cyclist.

Group 2 (Class B 125 minimum)

B 125 Sidewalks, pedestrian zones and similar surfaces, parking zones and multiple story cars parks.

Group 3 (Class C 250 minimum)

C 250 For access Covers and gully tops installed in the area of kerbside channels of roads which when measured from the kerb edge, extend a maximum of 0,5m into the carriageway and a maximum of 0,2m into the footway. (see picture above).

Group 4 (Class D 400 minimum)

D 400 Carriageway of Roads (including pedestrian streets), hard shoulders and parking areas for all types of vehicles.

Group 5 (Class E600 minimum)

E 600 Areas imposing high wheel loads, e.g. docks, aircraft pavements. In areas of extreme traffic volumes (in excess of 1,500 vehicles per day) we recommend the use of E600 loading class products.

Group 6 (Class F 900)

F 900 Areas subjected to extreme weight loads – ports and airports.

According to standard UNI EN 124 the choice of the correspondent product is part of the responsibility of the project engineer. If in doubt, (in case of areas subjected to heavy traffic or high loads) we suggest to choose the superior class of products.

INDEX

1. Furniture	Page 4
2. Manhole Covers	Page 5
3. Grating and Frames	Page 9
4. Drainage Channels	Page 10
5. Manhole/ Inspection Chambers	Page 12
6. Fabricated Covers and Frame Section	Page 14
7. Waterworks Covers and Frame	Page 15



We offer a range of street furniture, please contact us for further details and pricing.



Banquette

/ Model C-1012

- Oxiron feet of powder painted steel oven.
- Tropical timber.
- Galvanized steel fasteners.
- Wood protective treatment fungicide, insecticide and repellent.



Modo Madera

/ Model C-106

- Ductile cast iron legs, Powder coated with Oxiron paint.
- Guinea Wood treated and laser varnished with open pore.



Arco

/ Model C-2008

- Steel Folding Bin
- Primed and painted baked powder coated with Oxiron with Top Cover
- Key locked. Semi-folded (facilitates removal of the bag).
- Capacity 85 litres



Barcelona

/ Model C-23GT

- Painted galvanised Bin with top Cover
- (Capacity 60L)



Newport

/ Model J-9

- Wood guinea with Stainless Steel Internal planter



Dori

/ Model J-19

- Planter painted sheet steel.
- Dimensions 773X773 and 600mm. Height.



Cuadrado

/ Model C-49

- Ductile Iron.
- 4 pieces with 1192 x 1193mm Overall with 448mm Opening
- Primer and painted oxiron.



Circular

/ Model C-47

- Ductile Iron.
- 4 pieces. With Overall Diameter of 1254mm with 450mm Opening
- Primer and painted Oxiron



Duna

/ Model C-525

- Steel body with a Stainless Steel Head
- Primer and painted Oxiron
- Measure 998x93mm.



Eco

/ Model C-43D ECO

- Steel body with Stainless Steel Strip with primer and painted Oxiron



Montreal

/ Model C-500

- 304 Stainless Steel
- 1000mm x 104mm



Montreal Bollard Removable Base

/ Model C-500-500

Rio Circular D400 Cover and Frame



Specification

- Ductile Iron Cover and Frame
- 3rd Party Certified to BS EN 124 D400 Loading (Copy available on request)
- Hinged round cover & frame open at 120° and removable from the frame vertically
- Snap Locked as standard or can be locked with a bolt
- Black Bitumen Coated
- Polyethylene ring on frame to prevent noise and vibration
- Skeleton Flange

Optional Extra: Badging

Product Code	Clear Opening	Overall Size	Locking	Frame Height
MH-D-R1	600mm	805mm Round Frame	Snap Locked	100mm
MH-D-R2	600mm	850 x 850mm Square Frame	Snap Locked	100mm
MH-D-R100	600mm	803mm Round Frame	Snap Locked	100mm
MH-D-R1-LKD	600mm	805mm Round Frame	Locked with Bolt	100mm
MH-D-R2-LKD	600mm	850 x 850mm Square Frame	Locked with Bolt	100mm

Moscow Double Tri D400 Non ROCK Cover and Frame



Specification

- Ductile Iron Cover and Frame
- 3rd Party Certified to BS EN 124 D400 Loading (Copy available on request)
- Black Bitumen Coated
- Non-Rock 3 Point Suspension
- Skeleton Flange

Optional Extra: Badging, Locking, Safety Grids and Security Plate.

Product Code	Clear Opening	Overall Size	Frame Height	
MH-D-6767	675 x 675mm	827 x 827mm	100mm	
MH-D-6060	600 x 600mm	720 x 720mm	100mm	
MH-D-6060-RO	600DIA	720 x 720mm	100mm	Round Opening DCC Spec.
MH-D-6060-15	600 x 600mm	750 x 750mm	150mm	
MH-D-6060-15-RO	600DIA	750 x 750mm	150mm	Round Opening DCC Spec.
MH-D-7575	750 x 750mm	904 x 904mm	100mm	
MH-D-9060	900 x 600mm	1054 x 754mm	100mm	
MH-D-12067	1200 x 675mm	1374 x 850mm	100mm	
MH-D-9090	900 x 900mm	1050 x 1050mm	100mm	

ZEroCK D400 Cover and Frame



Specification

- Ductile Iron Cover and Frame
- 3rd Party Certified to BS EN 124 D400 Loading (Copy available on request)
- The contact surfaces of frame and cover are worked by machine and reclined, with a V-shape, so as to obtain a perfect watertight closing system, with no tolerance and impossibility of any rocking problem.

Optional Extra: Badging.

Product Code	Clear Opening	Overall Size	Frame Height
MH-D-CHD70V	600 x 600mm	760 x 760mm	100mm

Toronto T Range Hinged and Locked D400 Cover and Frame



Specification

- Ductile Iron Cover and Frame
- 3rd Party Certified to BS EN 124 D400 Loading (Copy available on request)
- Hinged Triangular cover & frame open at 110° and 90° can be safely removed from the frame.
- The cover is locked with a stainless steel lock, operable using a special shaped key which guarantees safety and prevents the opening of the manhole covers by unauthorised personnel
- The key becomes a comfortable handle for opening and closing the cover.
- Black Bitumen Coated

Optional Extra: Badging.

Product Code	Overall Size	Clear Opening	Frame Height
MH-D-T60-60	800 x 730mm	600 x 600mm	100mm
MH-D-T60-120	800 x 1400mm	600 x 1200mm	100mm
MH-D-T75-90	1100 x 910mm	900 x 750mm	100mm
MH-D-T75-214	2275 x 950mm	2140 x 750mm	100mm
MH-D-T76-120	1330 x 960mm	1200 x 760mm	100mm
MH-D-T80-70	1000 x 830mm	800 x 700mm	100mm
MH-D-T90-60	1030 x 800mm	900 x 600mm	100mm
MH-D-T90-90	1030 x 1100mm	900 x 900mm	100mm
MH-D-T106-70	1190 x 900mm	1060 x 700mm	100mm

Barcelona B125 & C250 Round Cover and Frame



Specification

- Ductile Iron Round Cover and Square or Round Frame
- 3rd Party Certified to BS EN 124 B125 Loading (copy available on request)
- Closed Keyways
- Black Bitumen Coated
- One Piece Solid Top Cover

Optional Extra: Badging, Locking.

Product Code	Clear Opening	Overall Size	Frame Height	Hinged
MH-B-600R-SF	600mm	750 x 750mm	60mm	Yes
MH-B-600R-SF-DI	600mm	750 x 750mm	75mm	No
MH-C-600R-RF	600mm	750 x 750mm	75mm	No
MH-B-450R-RF	450mm	560mm	35mm	No
MH-B-300-RF	300mm	460mm	35mm	No

St. Peter's SQUARE B125 Cover and Frame



Specification

- Ductile Iron Cover and Frame
- 3rd Party Certified to BS EN 124 B125 Loading (Copy available on request)
- Closed Keyways
- Black Bitumen Coated
- One Piece Solid Top Cover

Optional Extra: Badging, Locking, Safety Grids, Security plate.

Product Code	Clear Opening	Overall Size	Frame Height
MH-B-2525	250 x 250mm	332 x 332mm	25mm
MH-B-3535	350 x 350mm	420 x 420mm	25mm
MH-B-4545	450 x 450mm	540 x 540mm	27mm
MH-B-6045	600 x 450mm	660 x 510mm	40mm
MH-B-6060	600 x 600mm	735 x 735mm	40mm
MH-B-7272	750 x 750mm	864 x 864mm	40mm
MH-B-9060	900 x 600mm	1000 x 700mm	60mm
MH-B-9090	900 x 900mm	1000 x 1000mm	60mm
MH-B-12267	1220 x 675mm	1320 x 775mm	60mm

Amsterdam B125 Joint Box Covers and Frame



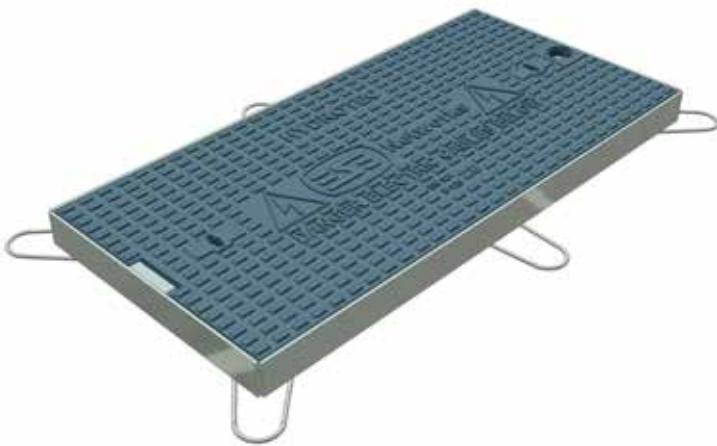
Specification

- Ductile Iron Cover and Frame (Single Unit)
- Ductile Iron Cover and Galvanised Frame
- 3rd Party Certified to BS EN 124 B125 Loading (copy available on request)
- Multiple Unit have a T bar to add in the removal of the cover.
- Black Bitumen Coated
- Locked

Optional Extra: Badging.

Product Code	Clear Opening	Overall Size	Frame Height	Waterway Area
MH-B-9045-LKD	900 x 450mm	1000 x 550mm	55mm	N/A
MH-B-9093-LKD	900 x 938mm	1000 x 1038mm	55mm	N/A
MH-B-90147-LKD	900 x 1427mm	1000 x 1527mm	55mm	N/A
MH-B-90192-LKD	900 x 1922mm	1000 x 2022mm	55mm	N/A

ESB VC Range B125 Covers and Frame



Specification

- Ductile Iron Cover and Galvanised Frame
- 3rd Party Certified to BS EN 124 B125 Loading (copy available on request)
- Multiple Unit have a T bar to add in the removal of the cover.
- Cover is Black Bitumen Coated
- Locked
- Galvanised Steel Frame

Product Code	Clear Opening	Overall Size	Frame Height
MH-B-VC1	315 x 765mm	600 x 970mm	56mm
MH-B-VC2	728 x 765mm	937 x 1050mm	56mm
MH-B-VC3	765 x 1135mm	1050 x 1390mm	56mm

VC2 Plastic Minipillar Chamber



Specification

- Code: MH-CH-VC2-PLAS
- ESB approved minipillar chamber
- Pre-cut knockout duct entries
- Includes full mounting kit for minipillar
- 750x750x800mm deep

Clermont C250 Dished Grating & Frame



Specification

- Ductile Iron Gully Grating and Frame
- 3rd Party Certified to BS EN 124 C250 and D400 (where applicable)
- Black Bitumen Coated
- Anti-Theft Captive Hinged
- Skeleton Frame
- LKD = Locked Grating and Frame

Product Code	Clear Opening	Overall Size	Frame Height	Loading	Waterway Area
MH-GF-C-3931-DH-LK	390 x 315mm	545 x 470mm	100mm	C250	745cm ²
MH-GF-C-99-DH	225 x 225mm	237 x 237mm	40mm	C250	190cm ²

Cologne C250 & D400 3 sided Hinged Grating & Frame



Specification

- Ductile Iron Gully Grating and Frame
- 3rd Party Certified to BS EN 124 C250 and D400 (where applicable)
- Black Bitumen Coated
- Anti-Theft Captive Hinged
- Skeleton Frame
- LKD = Locked Grating and Frame

Product Code	Clear Opening	Overall Size	Frame Height	Hinged	Waterway Area
MH-GF-C-3410-LKD	340 x 315mm	498 x 398mm	75mm	C250	675cm ²
MH-GF-D-3631-LKD	365 x 310mm	515 x 395mm	100mm	D400	770cm ²
MH-GF-D-4337-LKD	430 x 370mm	520 x 520mm	100mm	D400	1155cm ²
MH-GF-C-1212	300 x 300mm	360 x 360mm	35mm	C250	338cm ²
MH-GF-C-1515	340 x 340mm	435 x 420mm	35mm	C250	698cm ²

Lisa D400 Grating and Frame



Specification

- Ductile Iron Gully Grating and Frame
- 3rd Party Certified to BS EN 124 D400
- Black Bitumen Coated
- Locked

Product Code	Clear Opening	Overall Size	Frame Height	Loading	Waterway Area
MH-GF-D-GHK85	610mm Round	850 x 850mm	100mm	D400	1130cm ²
MH-GF-D-6060	600 x 600mm	800 x 800mm	100mm	D400	2000cm ²

PVC Road Gully



Specification

- Plastic HDPE Gullies supplied complete with internal trap and rodding eye.
- 100% recycled
- DN Outlet 178
- Internal Depth 750
- DN Internal 450 or 350

MH-GP-67002 750 x 350 x 178mm Ribbed PVC Road Gully
 MH-GP-67009 750 x 450 x 178mm Ribbed PVC Road Gully

4all Domestic Drainage Channel - HDPE Base with HDPE or Galvanised Grating

HDPE Channel 1000mm Long

Specification



- Click the grating in and out, no screws required.
- Designed in accordance with EN 1433.
- Easy to assemble.
- The smooth waterproof surface allows a quick waterflow drainage.
- The external structure with ribs improves the anchoring between concrete and HDPE and is designed for a better strength and rigidity of the channel.
- High mechanical and chemical resistance.
- Lightweight.
- Easy to carry.



2 End Cap and 110mm Outlet Pack (513200)



Corner Box with HDPE Grate (613201)



Corner Box with GALV Grate (613200)

Product Code	Length	Height Overall	Width Overall	Loading	Certification	Grating Type
MH-DC-613000	1000mm	92mm	120mm	A15	CE	Galvanised
MH-DC-613005	1000mm	92mm	120mm	A15	CE	HDPE
MH-DC-613010	1000mm	92mm	120mm	A15	CE	Stainless Steel

Nice A15, B125 and C250 Drainage Channel- HDPE Base

Pictured is DC-610035 with A15 Galvanised Grating



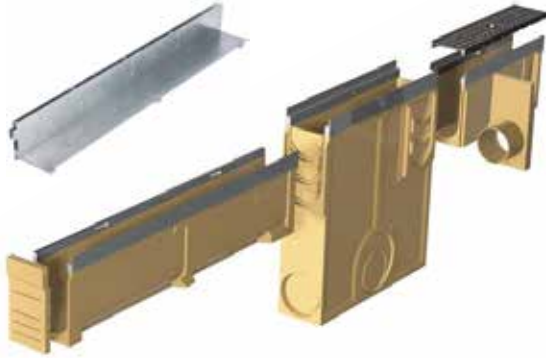
Specification

- Polypropylene Channel complete with Galvanised or Ductile Iron Grating incorporating a slip resistant tread pattern
- A15 Galvanised Steel Grating
- B125 Ductile Iron Mesh Grating
- C250 Ductile Iron 6mm Slot Grating
- Grating is Black Bitumen Coated
- Grating and Channel is supplied with Bolts and Bars

Note: The product comes with Locking Bolts and Bars.

Product Code	Length	Height Overall	Width Overall	Loading	Certification	Grating Type
MH-DC-610075	1000mm	120mm	135mm	A15	CE	7mm Slot HDPE Plastic
MH-DC-610035	1000mm	120mm	135mm	A15	CE	9mm Slot Galvanised
MH-DC-610015	1000mm	120mm	135mm	B125	CE	10 x 10 Square Mesh Ductile Iron
MH-DC-610167	1000mm	120mm	135mm	C250	CE	6mm Slot Ductile Iron
MH-DC-610168	1000mm	220mm	135mm	B125	CE	10mm Slot 100mm Upstand Brickslot
MH-DC-610169	1000mm	220mm	135mm	C250	CE	10mm Slot 100mm Upstand Brickslot
MH-DC-610170	1000mm	120mm	135mm	B125	CE	30 x 30mm Square Mesh Galvanised
MH-DC-610171	1000mm	120mm	135mm	B125	CE	30 x 10mm AntiHeel Mesh Galvanised
MH-DC-610172	1000mm	120mm	135mm	C250	CE	30 x 30mm Square Mesh Galvanised
MH-DC-610173	1000mm	120mm	135mm	C250	CE	30 x 10mm AntiHeel Mesh Galvanised

Polymor Concrete Channel Galvanised Edge Rail C250, D400 and E600



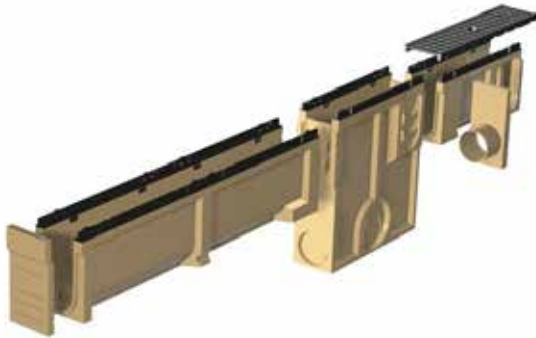
Specification

- Channel manufactured from Hard-wearing Polymor Concrete
- Constant Depth Channel
- Stepped Fall System
- C250,D400 and E600 Loading with Galvanised Steel Edge Rail
- E600 and F900 has Ductile Iron Edge Rail
- 6mm Slot Pedestrian Friendly grating

Accessories: End Caps, End Cap Outlet, Sump Units.
(Other widths and depths available on request)

Product Code	Length	Height Overall	Width Overall	Loading	Certification	Grating Type
MH-DC-C-SE10.L00.SL	1000mm	127mm	130mm	C250	CE	8mm Slot Ductile Iron Grating
MH-DC-C-SE10.L05.SL	1000mm	150mm	130mm	C250	CE	8mm Slot Ductile Iron Grating
MH-DC-C-SE10.L10.SL	1000mm	187mm	130mm	C250	CE	8mm Slot Ductile Iron Grating
MH-DC-C-SE10.L20.SL	1000mm	247mm	130mm	C250	CE	8mm Slot Ductile Iron Grating
MH-DC-D-SE10.L05.AH	1000mm	150mm	130mm	D400	CE	6mm Slot Ductile Iron Grating
MH-DC-E-SE10.L05.SL	1000mm	150mm	130mm	E600	CE	8mm Slot Ductile Iron Grating
MH-DC-C-SE10.L05.BL	1000mm	150mm	130mm	C250	CE	10mm Slot 100mm Upstand Brickslot

Polymor Concrete Channel Cast Iron Edge Rail E600 and F900



Specification

- Channel manufactured from Hard-wearing Polymor Concrete
- Constant Depth Channel
- Stepped Fall System
- E600 and F900 Loading with CAST IRON Edge Rail

Accessories: End Caps, End Cap Outlet, Sump Units.
(Other widths and depths available on request)

Product Code	Length	Height Overall	Width Overall	Loading	Certification	Grating Type
100mm Wide Internal						
MH-DC-E-SE10.L00E.SL	1000mm	127mm	130mm	E600	CE	9mm Slot Ductile Iron Grating
MH-DC-E-SE10.L10E.SL	1000mm	184mm	130mm	E600	CE	9mm Slot Ductile Iron Grating
MH-DC-E-SE10.L20E.SL	1000mm	247mm	130mm	E600	CE	9mm Slot Ductile Iron Grating
MH-DC-F-CE10.L00.SL	1000mm	127mm	130mm	F900	CE	10mm Slot Ductile Iron Grating
MH-DC-F-CE10.L10.SL	1000mm	184mm	130mm	F900	CE	10mm Slot Ductile Iron Grating
MH-DC-F-CE10.L20.SL	1000mm	247mm	130mm	F900	CE	10mm Slot Ductile Iron Grating
150mm Wide Internal						
MH-DC-E-SE15.L00.SL	1000mm	225mm	190mm	E600	CE	10mm Slot Ductile Iron Grating
MH-DC-E-SE15.L10.SL	1000mm	275mm	190mm	E600	CE	10mm Slot Ductile Iron Grating
MH-DC-E-SE15.L20.SL	1000mm	325mm	190mm	E600	CE	10mm Slot Ductile Iron Grating
MH-DC-F-CE15.L00.SL	1000mm	225mm	190mm	F900	CE	10mm Slot Ductile Iron Grating
MH-DC-F-CE15.L10.SL	1000mm	275mm	190mm	F900	CE	10mm Slot Ductile Iron Grating
MH-DC-F-CE15.L20.SL	1000mm	325mm	190mm	F900	CE	10mm Slot Ductile Iron Grating

200mm and 300 Wide Internal Channel also available in E600 and F900

Ecolite

Ecolite is a modular inspection chamber system which is ideal for water utilities, including hydrants and service valves, and many other applications, including access and house inspection chambers.



Able to sustain 40 tonnes loading (with 60 tonnes and 90 tonnes in some of the larger sizes).

Available sizes:

150x150mm, 380x230mm, 430x280mm, 450x600mm, 600x600mm, 750x600mm and 900x600mm

Ring height = 150mm

150x150mm and 430x280mm are also available with ring heights of 25mm and 50mm

Wall thickness is 40mm for 150x150, 65mm for 380x230x430x280. 90mm for larger sizes.

Key Advantages

- Lightweight yet very strong
- Manufactured from polypropylene - durable, doesn't leach and is free from BPA
- Much less breakage than concrete
- Frostproof
- Resistant to acids, alkalis, fats and oils
- Drastically reduces need for mechanical lifting
- Compatible with concrete chamber sections
- Made in UK to ISO9001 Quality Standards

EasyLiner

EasyLiner is a lightweight yet rigid chamber which can be easily assembled. All components lock together, making EasyLiner a robust chamber which is suitable for a variety of uses. This chamber system is normally concrete back filled and offers an alternative to rotationally moulded liners, over which EasyLiner has cost and technical advantages.



The chamber can be supplied fully assembled or flatpacked

All components are made from recycled plastic, strong polypropylene, and are recyclable at the end of use

Knockouts to suit 60, 110 and 180 mm pipe. Can be drilled easily for other diameters.

Ring height = 320mm

Sides available 300mm, 450mm and 600 mm

Wall thickness = 58mm

Key Advantages

- Lightweight yet very strong as all components lock together to make a robust chamber
- Manufactured from durable polypropylene
- No mechanical lifting needed
- So easy to assemble
- Made from recycled plastic & recyclable at end of use
- Made in UK to ISO9001 Quality Standards

Atlas

Atlas is a range of innovative structural access chambers for underground installations. Ideal for all ducted network applications where access chambers are required for inspection and maintenance, Atlas is suitable for all footway and highway projects, including the creation of:

- Duct Access Chambers, Drawpits, Catchpits, Valve & Meter Chambers

They are able to withstand high loading forces which means that a concrete backfill is not required in many applications. The modular design allows for highly customised sizes and configurations, as well as extremely efficient transport and rapid response to bespoke orders.



The components of the Atlas chamber system are manufactured from recycled polypropylene and have knock-outs for 110mm ducting.

The system is available in various sizes and can withstand loadings from 12.5 tonnes (with larger chambers over 25 tonnes). The walls are available in 300mm, 450mm, 600mm, 750mm, 900mm etc and can therefore be assembled into a great variety of chamber sizes.

The duct entry options are available with 110mm duct entry knockouts pre-moulded into the wall sections, but can also be supplied with larger pre-drilled duct entries to despatch and meet specific site requirements.

Ring height = 150mm; Wall thickness = 75mm

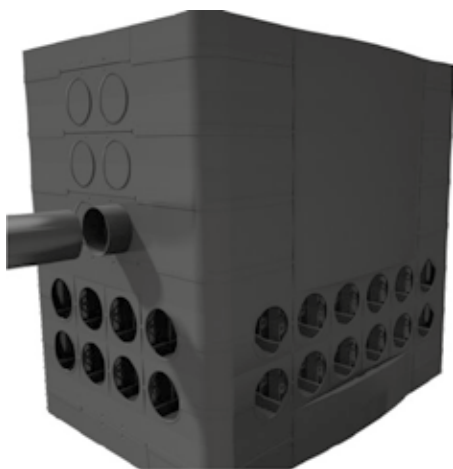
B125 loading

Key Advantages

- Lightweight yet very strong as all components lock together to make a robust chamber
- Manufactured from durable polypropylene
- No mechanical lifting needed.
- So easy to assemble
- Made from recycled plastic & recyclable at end of use
- Made in UK to ISO9001 Quality Standards

EasvStack

EasyStack is a twin-walled inspection chamber system which is manufactured from recycled polypropylene. This chamber system can withstand loads of up to 90 tonnes which makes it suitable for almost all areas of the construction industry, including airport and dockyard installations. The EasyStack chamber system was used for one of our projects in the London Gateway Port. They are twin-walled and can be reinforced to cope with the large lateral forces experienced in deep chambers



The parts are available with wall lengths of 300mm, 450mm, 600mm, 675mm, 750mm, 850mm and 900mm and so on, and can therefore be assembled into larger chambers with walls up to several metres long.

They can also be strengthened with steel parts to make chambers resistant to high lateral loads.

EasyStack's duct entry options are available with 110mm entries pre-formed and with 110mm knockouts, but can also be supplied with larger pre-drilled duct entries to meet specific site requirements.

Ring height = 150mm, Wall thickness is between 100mm and 120mm

Key Advantages

- Lightweight yet very strong as all components lock together to make a robust chamber
- Withstands high vertical and lateral pressures
- Removable plugs to enable easy fitting of pipes
- Versatile - many different sizes of chamber can be made
- Corner holes can be filled with concrete for extra strength and to facilitate anchorage of manhole cover frame.

Internal Double Sealed Recessed CF

Code	Clear Opening	Overall	Tray Recess
MH-RT-3030	300 x 300mm	390 x 390 x 88mm	48
MH-RT-4545	450 x 450mm	540 x 540 x 88mm	48
MH-RT-6045	600 x 450mm	690 x 540 x 88mm	48
MH-RT-6060	600 x 600mm	690 x 690 x 88mm	48
MH-RT-7560	750 x 600mm	840 x 690 x 88mm	48
MH-RT-7575	750 x 750mm	840 x 840 x 88mm	48



Also available in Aluminium and Stainless Steel

Galvanised Pressed Steel Covers and Frames

Size	2 Ton	5 Ton	10 Ton
9 x 9	MH-GC-99-2	N/A	N/A
12 x 12	MH-GC-1212-2	MH-GC-1212-5	N/A
18 x 18	MH-GC-1818-2	MH-GC-1818-5	MH-GC-1818-10
24 x 18	MH-GC-2418-2	MH-GC-2418-5	MH-GC-2418-10
24 x 24	MH-GC-2424-2	MH-GC-2424-5	MH-GC-2424-10



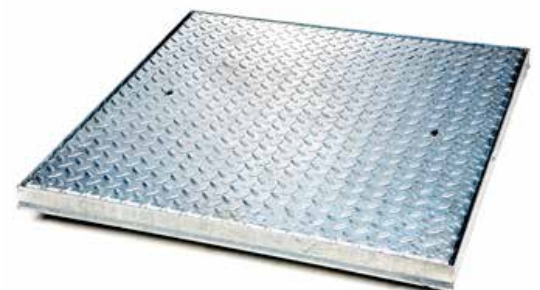
Recessed Block Pavior 10Ton GLW and D400 Loading

Code	Clear Opening	Overall	In-Tray Depth	Total Height
For 80mm Paving Brick				
MH-RBP-3030-10	300 x 300 mm	400 x 400mm	100mm	110mm
MH-RBP-4545-10	450 x 450mm	500 x 500mm	100mm	110mm
MH-RBP-6060-10	600 x 600mm	700 x 700mm	100mm	110mm
For 60mm Paving Brick				
MH-RBP-3030-8	300 x 300mm	400 x 400mm	80mm	90mm
MH-RBP-4545-8	450 x 450mm	550 x 550mm	80mm	90mm
MH-RBP-6060-8	600 x 600mm	700 x 700mm	80mm	90mm
D400 Loading for 80mm Paving Brick				
MH-D-CRDS40 -100	300 x 300mm	450 x 450mm	100mm	120mm
MH-D-CRDS55-100	450 x 450mm	600 x 600mm	100mm	120mm
MH-D-CRDS70-100	600 x 600mm	750 x 750mm	100mm	120mm



AJ Cover Only

MH-AJ-3030	AJ Cover only Galvanised
MH-AJ-3030-BK	AJ Cover Only Galvanised /Painted Black



Warsaw D400 Waterworks Covers & Frame

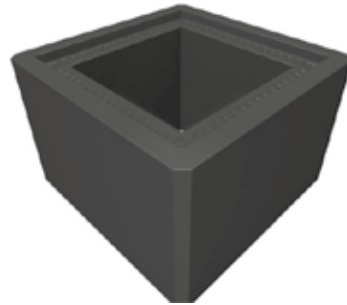


150mm High Chamber Sections also available on Request.

Specification

- Ductile Iron Cover and Frame
- Manufactured to: BS 5834 Part 3 and BS 750 or BS EN124 D400
- Black Bitumen Coated

Optional Extra: Badging.



Grade A / D400 Waterworks Covers and Frame

Product Code	Clear Opening	Overall Size	Frame Height	Badging
MH-WW-D-4328-FH	430 x 280mm	530 x 380mm	100mm	FH (Fire Hydrant)
MH-WW-D-4328-M	430 x 280mm	530 x 380mm	100mm	M (Water Meter)
MH-WW-D-4328-AV	430 x 280mm	530 x 380mm	100mm	AV (Air Valve)
MH-WW-D-4328-SV	430 x 280mm	530 x 380mm	100mm	SV (Sluice Valve)
MH-WW-D-1515-SV	150 x 150mm	262 x 262mm	100mm	SV (Sluice Valve)

Wolfsburg B125 Waterworks Covers and Frame



Specification

- Ductile Iron Cover and Frame
- Manufactured to: BS EN124 B125
- Black Bitumen Coated
- Skeleton Frame

Optional Extra: Badging.

B125 Waterworks Cover and Frame

Product Code	Clear Opening	Overall Size	Frame Height	Badging
MH-WW-B-4427-FH	445 x 275mm	575 x 410mm	65mm	FH Fire Hydrant
MH-WW-B-4427-M	445 x 275mm	575 x 410mm	65mm	M Water Meter
MH-WW-B-4427-AV	445 x 275mm	575 x 410mm	65mm	AV Air Valve

Manhole Covers Ireland
www.mhcireland.com

We cover everything!

Portland, Lorrha, Nenagh, Co. Tipperary
Phone: +353 (0)94 9033022
E-mail: info@mhcireland.com