



Manhole Covers Ireland

We cover everything!

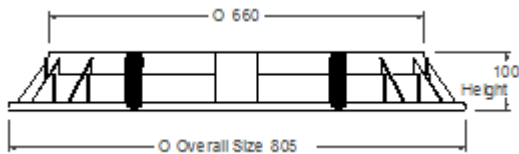
Lowpark, Charlestown, Co. Mayo, Ireland.

Phone: 094 9033022 Fax: 094 9254970

Email: info@mhcireland.com Web Site: www.mhcireland.com

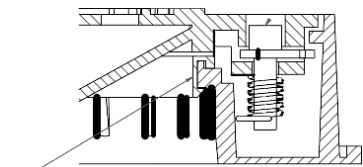
R-1/R-2 Locked Range D400 Cover & Frame

Inspection manhole cover in Spheroidal cast iron EN- GJS-500-7 conforming to norm **UNI EN 1563:2004** with load bearing capacity over 400 kN (40 tons), conforming to the load class D400 as set out by norm EN 124:94.



SGS

Turnbuckle Locking System



R-2 Square Frame



Product Code	Clear Opening	Overall Size	Frame Height	Waterway Area	Certification
MH-D-R1-LKD	600mm	850mm	100mm	N/A	SGS
MH-D-R2-LKD	600mm	850 x 850mm	100mm	N/A	SGS

FRAME

It can be square or circular in shape, with an inside circular passage. It has a EPDM gasket placed inside, in order to increase stability and eliminate any rocking or noise. Furthermore, the hinge seatings of the cover have been cast. Externally, the outside border is flanged to optimise its hold in the cement and the insertion of the anchoring bolts.

COVER

It is circular in shape, hinged to the frame with maximum opening of 110°, 90° is the safety position (automatic locking) with the possibility of removing it without disassembling the hinge. It has an elastic closing -system provided with an elastic bar built into the cover, which creates an automatic opening/closing system. This can be carried out using building clays. A high stability is guaranteed by self-centering guides, placed under the cover with double stops. The upper surface is designed to be non-skid to allow the complete flow of water and avoid the creation of ice.

LOCKED

The closing system with key is made of stainless steel and it is operable with a Allen key, which increases safety and prevents the opening of manhole covers by non authorised personnel.

INTENDED USE

It is designed for footpaths and parking areas for all types of road vehicles (see norm EN 124 group 4).

TREATMENT

The manhole cover has a protective coating of black paint.