

MANHOLE COVERS

# TITAN

## 1000



INFINITE CONFIGURATION MANHOLE COVER

LOGOTYPE



LOCKING



TIGHTNESS



ASSISTANCE



ANTI FALL



HIGH TRAFFIC



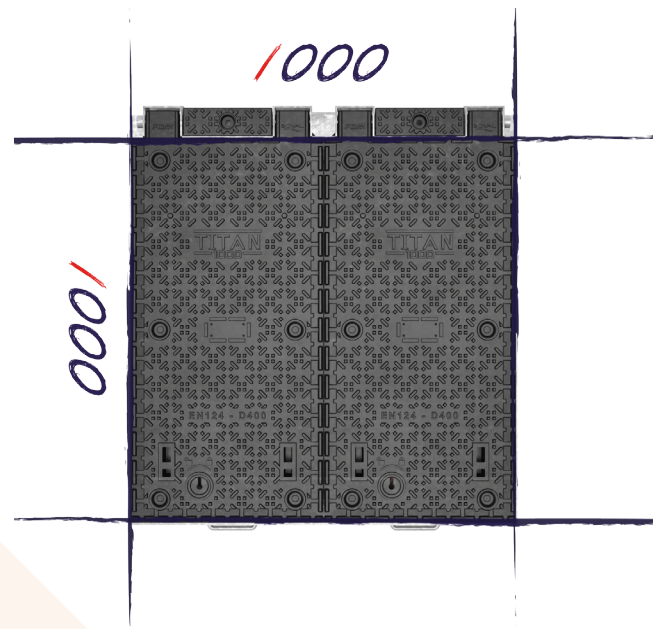
HAND RAIL

SOVAL  
export

# TITAN

EXTEND HIS RANGE  
OF MANHOLE COVER WITH

# TITAN 1000



Our brand new ductile manhole cover TITAN 1000 can be supplied in many clear opening sizes and options.



High traffic



Tightness



Assistance



Anti fall



Locking



Hand rail



Logotype



## MULTI OPTIONS MANHOLE COVER

Our TITAN 1000 is in **conformity with the EN 124 and D400 class high traffic**. Moreover, it answers to a very wide range of clear opening and option without modification of **the civil works**.





## THE ESSENTIAL



*Titan 1000 is a Ductile cast iron GS-500/7 Manhole cover according to the EN 124 - D400 class, equipped with a customized frame with no consequence onto the concrete structure of the manhole.*

### ASSISTANCE FOR OPENING



Each cover are assisted and easy handling to the opening and to the closing with only one person.

Different assistance solution are available :

- Standard gas spring ;
- Stainless steel gas spring ;
- Compression Spring.



### «PUSHED/SLAMMED» LOCKING SYSTEM



#### Automatic locking

Our Titan 1000 is equipped with « Pushed/slammed » locking system on each cover :

- Burglarproof, non clogging
- Automatic locking when closing
- Ergonomic key, 2 functions : - Locking/unlocking  
- Easy handling



### LOGOTYPE AND COATING



Our covers are coated with polyester paint giving an excellent anti-corrosion property even in aggressive environment (ex : H<sub>2</sub>S).

Black paint serial – other colour on request.

Possibility of logotype on each cover by :

- Logo stamped into the ductile cast iron of the cover;
- Stainless steel plate rivetted in our factory.





## TIGHTNESS

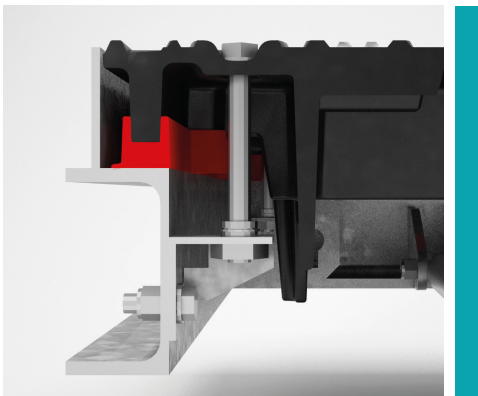


*A very specific thought has been achieved in order to answer to our customer needs and requests concerning the tightness of our manhole covers : available on request.*

### TIGHTENED MANHOLE COVER



Each cover are equipped with an **EPDM seal** and fixed on the cover with stainless steel screws.  
The tightness works with splice bar between each cover and stainless steel bolts.

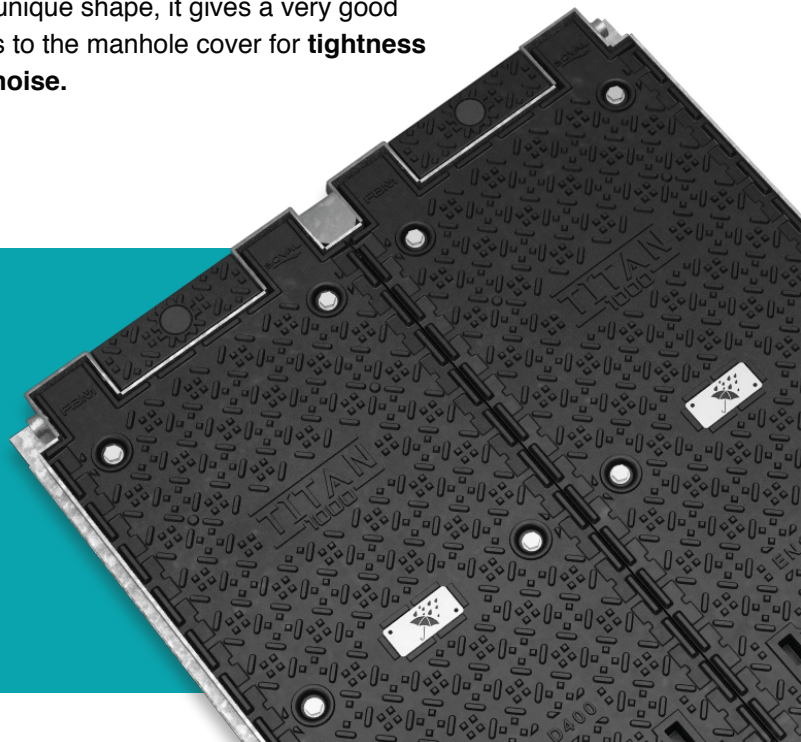


#### The EPDM seal moulded in one piece

Thanks to its unique shape, it gives a very good characteristics to the manhole cover for **tightness and against noise**.

### AGAINST WATER DRIPPING

Against water dripping, each cover of the TITAN 1000 is fixed with **6 stainless steel compression bolts** onto the total surface of the frame.





## PROTECTION



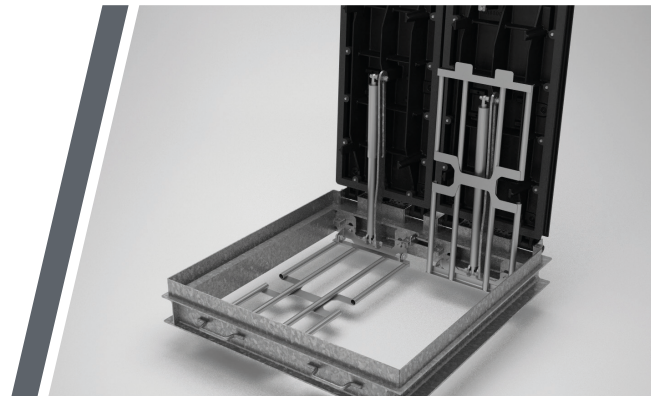
*The system allows to protect people and material against fall into the manhole.*

*One stainless steel bar resists to the fall of a soft body of 50kg under an height of 2.40 meters. This is equal to 1200 joules (recommendation of the french social organization CRAM).*

### INTEGRAL BAR GRID



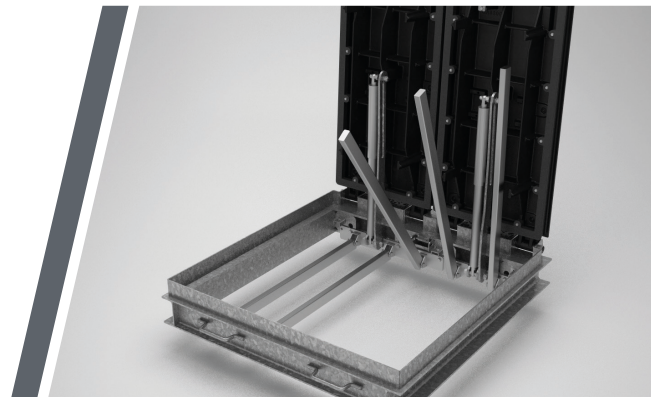
With one grid per cover, the Integral Bar grid system secures the workers and people when the manhole is opened. The grid opens on the same side of the cover. So the accesses of the manhole are on 3 sides. Stainless steel grids offering an high level of resistance against aggressive atmosphere.



### INDEPENDANT BAR GRID



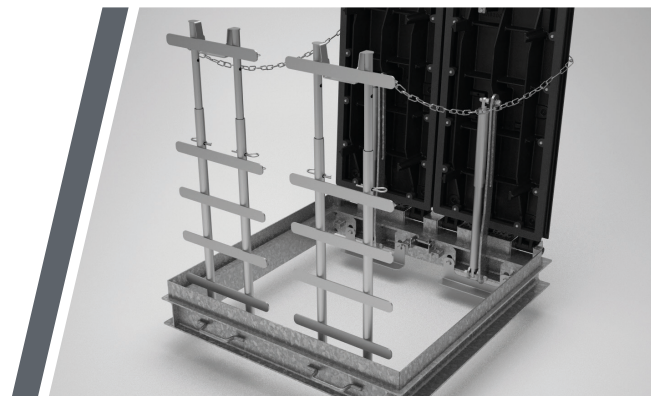
Thank to their independance, only the areas where we need to enter will be opened. The rest of the area remain secured.



### HAND RAIL GRID



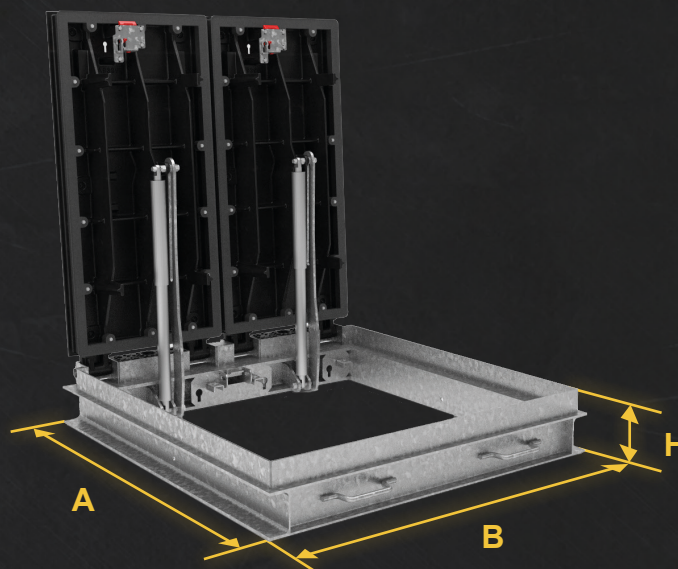
When opened, the grids are linked with a safety chain.







MADE IN  
FRANCE



Type of manhole	Lay-out	Clear opening	A	B	H	Weight of whole unit
TITAN-M2		1000 x 1000 mm	1200 mm	1120 mm	190 mm	318 kg
TITAN-M3		1000 x 1540 mm	1200 mm	1660 mm	190 mm	461 kg
TITAN-M4		1000 x 2080 mm	1200 mm	2200 mm	190 mm	605 kg
Weight of one cover						105 kg

Others dimensions : consult us

MANHOLE COVERS

# TITAN 1000



SOVAL EXPORT

1, rue de des Fonderies  
52130 BROUSSEVAL  
FRANCE  
Tél : +33(0)3 25 56 92 27  
Fax : +33(0)3 25 56 92 43  
mail : [export@soval.fr](mailto:export@soval.fr)

[www.soval.fr](http://www.soval.fr)